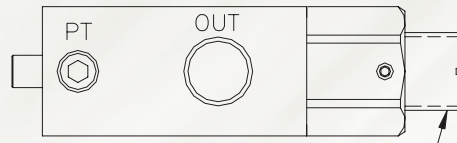
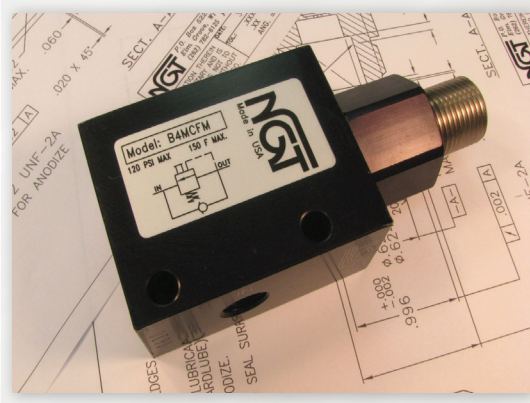
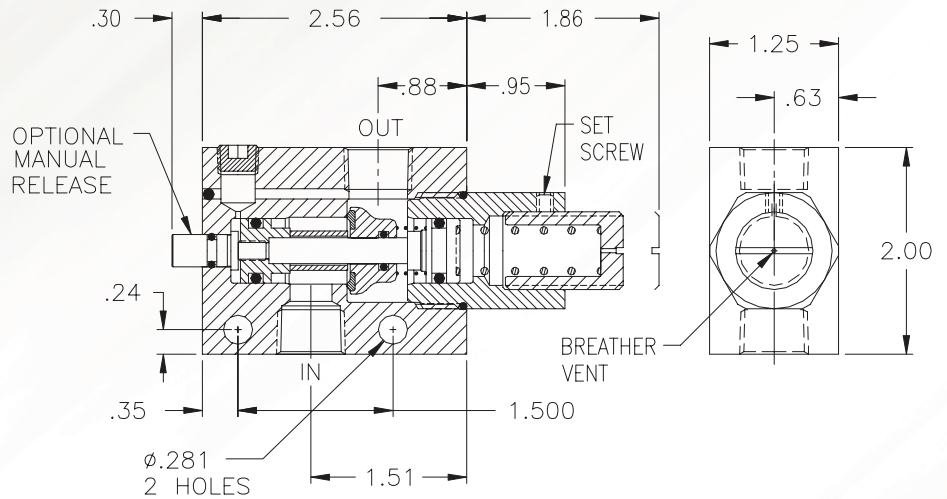


1/4, 3/8 NPTF & G1/4, G3/8 BSPP Pneumatic Counterbalance Valves



TURN CW TO INCREASE
LOAD HOLDING CAPACITY

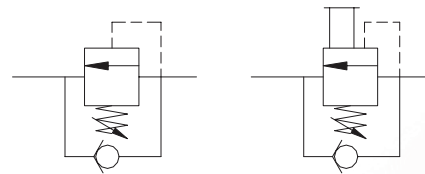
PORT SIZES	
INPUT	OUTPUT
1/4 NPTF	1/4 NPTF
3/8 NPTF	3/8 NPTF
G1/4 BSPP	G1/4 BSPP
G3/8 BSPP	G3/8 BSPP



- Optional Manual Release
- .0000522 cc/min Leak Rate
- Adjustable Load Setting

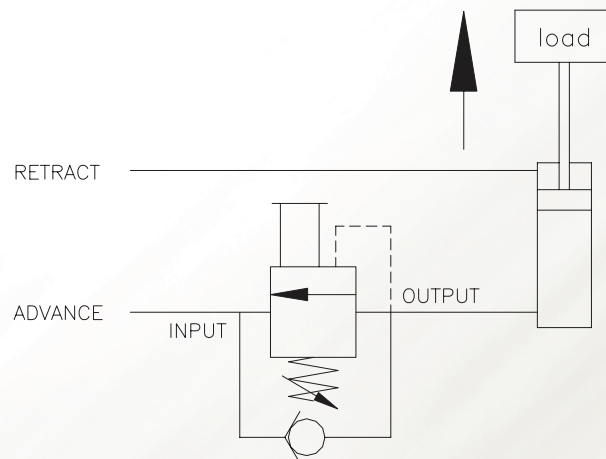
Basic Operation:

The counterbalance valve will hold a load in position until pressure or an external force is applied to move the load. Turning the adjusting screw clockwise will increase the load carrying capacity of the valve. Optional manual and flush manual release.



Operating Data:

Max. Pressure:	120 psi
Leak Rate:	.0000522 cc/min.
Temp. Range:	30-150 F
Cycle Rate:	1 cyc./sec.
Flow Capacity (Cv):	2.6
Cracking Pressure:	1-2 psi
Service:	Properly filtered dry and lubricated air.



MODELS	1/4 NPFT	3/8 NPFT	1/4 BSPP	3/8 BSPP
No Manual Release	B4MC00	B6MC00	BG4MC00	BG6MC00
Manual Release	B4MC0M	B6MC0M	BG4MC0M	BG6MC0M
Flush Manual Release	B4MCFM	B6MCFM	BG4MCFM	BG6MCFM